

# HAZ METAL FIXING SYSTEMS

Your Fixing Systems Specialist



## Framing Systems

Product Brochure  
HAZ-BR-FR-EN/12.14

# Framing systems

**HMP** Framing systems with channels and various accessories are used to build steel constructions for the installation of various types of secondary structures. Efficient modular support structures are built quickly and easily. Flexible and low cost application is achieved.

Framing systems consist of cold formed steel and stainless steel channels which are supplied with suitable T bolts and lock nuts to build secondary structures for various types of applications in construction. Attachments of any kind of elements are achieved with T bolts or lock nuts. Bolting is made freely at the desired position along the length of the channels.

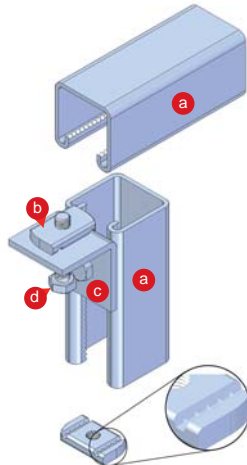
The use of framing systems increases installation times rapidly and results in the significant decrease in application costs. Work commences very quickly and the need work drilling and welding is eliminated which results in a better quality finish at lower installation costs.



## Advantages:

- Fast and Secure fixing.
- No time consuming welding and hole setting.
- No use of welding and drilling equipment.
- Adjustable and nonslip point fixing.
- Cost effective and flexible.
- Quick and easy fixing.
- Can be re-used.
- No special tools.

- a. **HMP**S Channel
- b. **HMLN** Lock nut
- c. **HCC** Channel connection
- d. **DIN 933** Set screw



## HMP C Channels



- Channels available with and without drilled holes
- A variety selection of channels to fit different loadings
- Toothed channels available for longitudinal loads

## HC Channel Connectors



- Channel connections are available in a variety of shapes and sizes
- Suitable for use with channel types 41/41, 41/21 & 36/36

## HMC Cantilever brackets

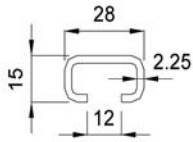


- Brackets available for projection sizes up to 700 mm
- Load capacities are verified according to different application types
- 41/41 & 36/36 C channels are used with corresponding T bolts & lock nuts

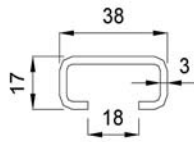
## HMPB C Channels



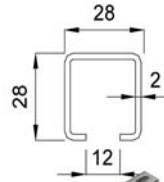
HMPB-28/15



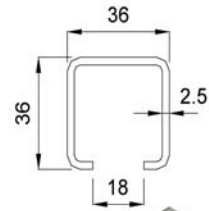
HMPB-38/17



HMPB-28/28



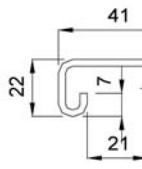
HMPB-36/36



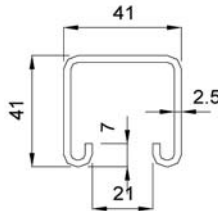
## HMPC & HMPS C Channels



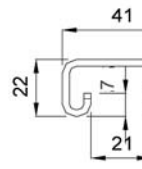
HMPC-41/22



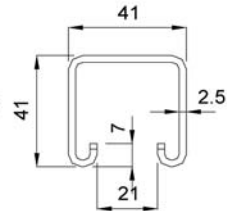
HMPC-41/41



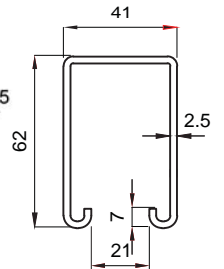
HMPS-41/22  
Toothed channel



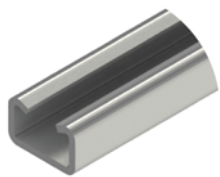
HMPS-41/41  
Toothed channel



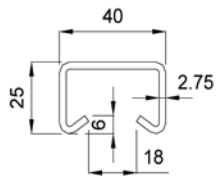
HMPS-41/62  
Toothed channel



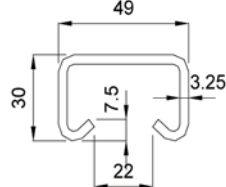
## HMPD C Channels



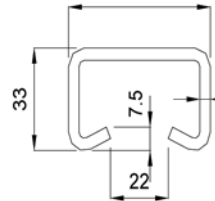
HMPD-40/25



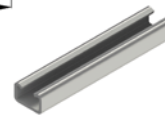
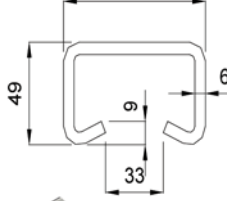
HMPD-49/30



HMPD-54/33

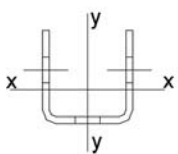


HMPD-72/49

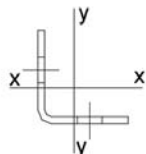


## HMPA U Channel & HMPL L Channel

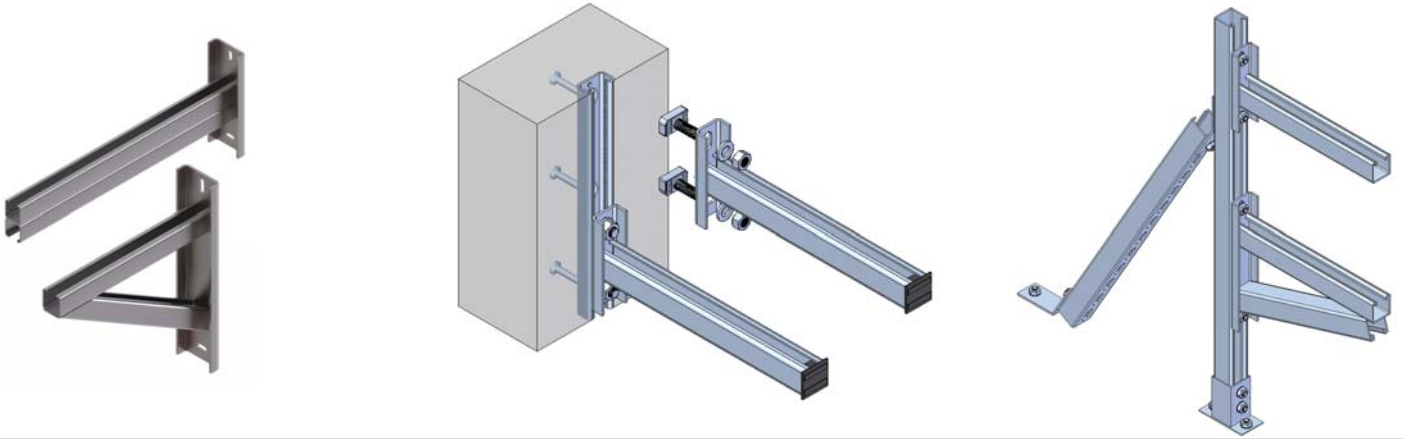
HMPA



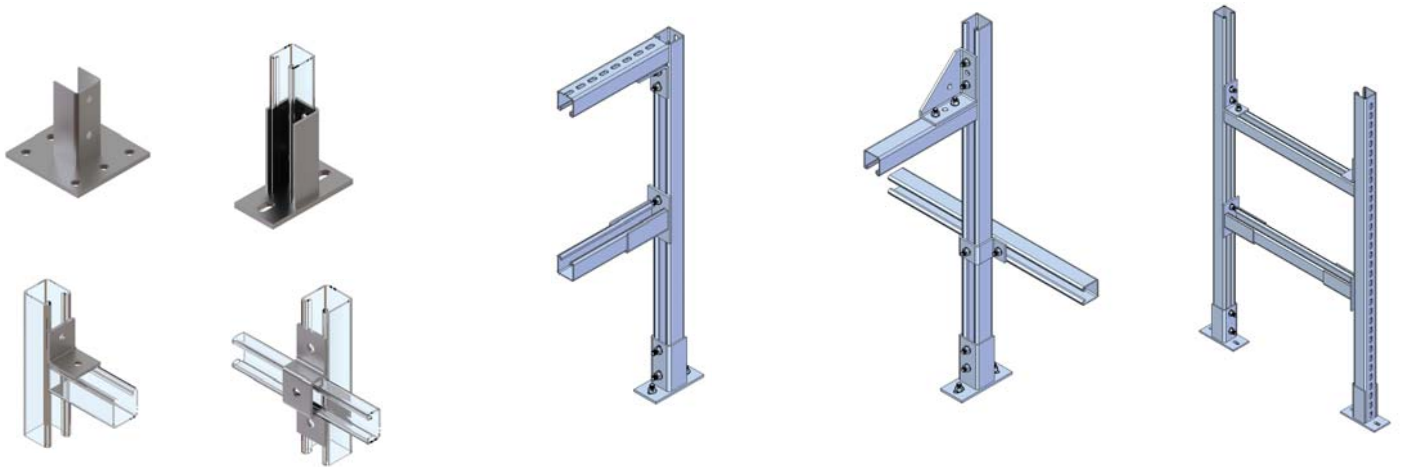
HMPL



## HMC Cantilever Brackets



## HCC Channel Connections



## Suspension systems

