

HAZ METAL FIXING SYSTEMS

Your Fixing Systems Specialist



Aluminium Sub Channel Systems

Product Brochure
HAZ-BR-AL-EN/12.14

Sub Channel Systems - Aluminium Channels

Fixing systems with aluminium sub channel systems are preferred due to its light weight and easiness of cutting and drilling. These systems are used for the installation of cladding panels such as, natural stone panels, ceramic panels and fibre cement panels.

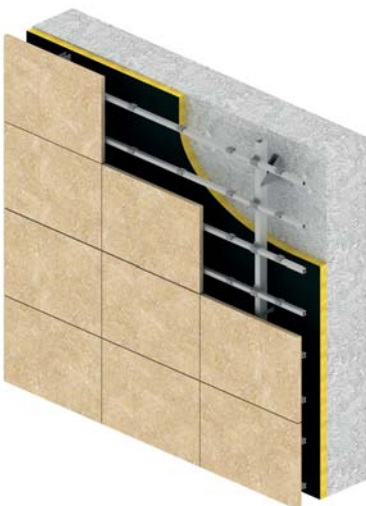
Three dimensional adjustability is enabled and fast installation is possible due to the light weight of aluminium and the ease of cutting and drilling on site.

- Fixing to sub channel structure which is attached to load bearing beams
- Light weight and easy to install
- Possibility of cutting and drilling aluminium channels provides flexibility
- Fully adjustable and allows fast installation with the use of self drilling screws

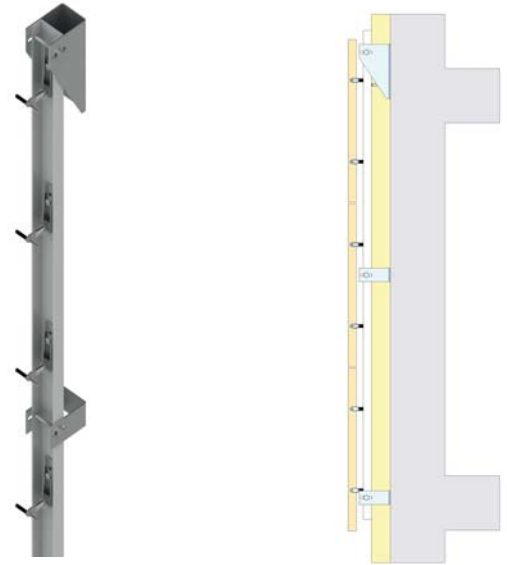
Sub Channel Fixing System with Vertically spanned channels



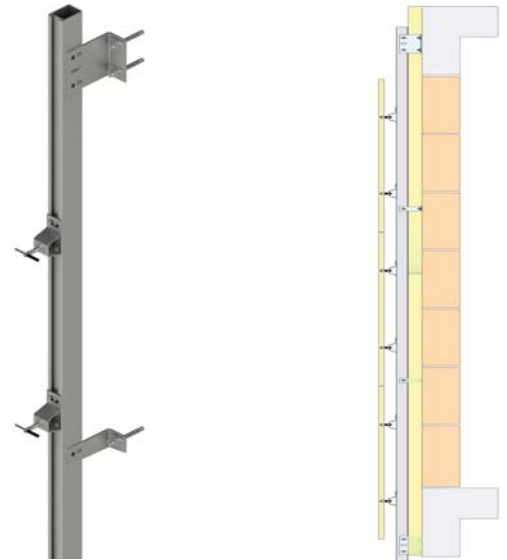
Sub Channel Fixing System with Vertically & Horizontally spanned channels



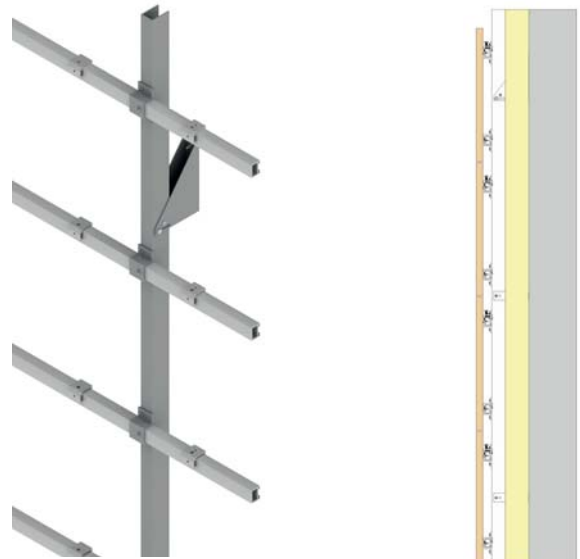
HMPC-HCA Sub Channel Fixing System



HMPA-HC2 Sub Channel Fixing System



HMPC-HC1/H Sub Channel Fixing System



Sub channel systems manufactured out of extruded aluminium. Various type of systems can be formulated to accommodated the requirements of the project. Aluminium channels are used to fix thin stone, fibre cement, ceramic panels and other light weight cladding materials. Available in aluminium grade T6066.

Sub Channel System

HMP-ALU-U

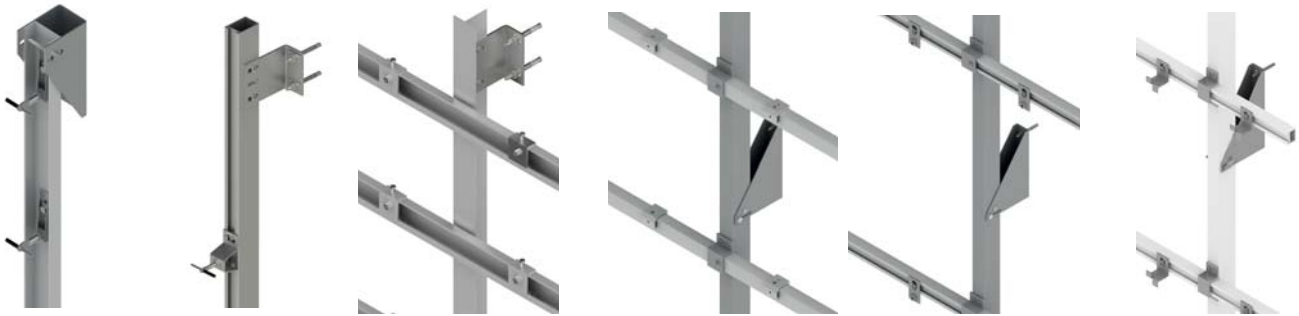
HMP-ALU-SP

HMP-ALU-P

HMP-ALU-AG

HMP-ALU-SP/H

HMP-ALU-KF



Steel Channels

HMP-ALU-U

HMP-ALU-BV

HMP-ALU-RV

HMP-ALU-T

HMP-ALU-BH

HMP-ALU-P



Supports & Restraints

HCSP4-AL

HCSP6-AL

HCSP3-AL

HCRS4-AL

HCR6-AL

HCRS3-AL



Adjustable Anchors

BA Body anchor

HZ02-SPX Z anchor

HZ00-SPX Z anchor

HA03-SPX L anchor



Aluminium brackets

HM-AG Agraf bracket

HM-P Agraf bracket

HM-AG-K Agraf bracket

HCC-ALU Connection

HCC-ALU Connection



HMP-ALU-AG Sub Channel System



- Sub channel system with vertical and horizontal channels
- Projection sizes up to 350 mm
- Recommended for loads up to 3500 N
- Attachment to stone with undercut bolts
- Hang on fixing on to horizontal channels

HMP-ALU-SP/H Sub Channel System



- Sub channel system with vertical and horizontal channels
- Projection sizes up to 350 mm
- Recommended for loads up to 3500 N
- Anchors with pins are set in to the channels slot and fixed with tabbing screws

HMP-ALU-SP Sub Channel System



- Sub channel system with vertical channels
- Projection sizes up to 250 mm
- Attachment to stone with pins
- Anchors with pins are set in to the channels slot and fixed with tabbing screws

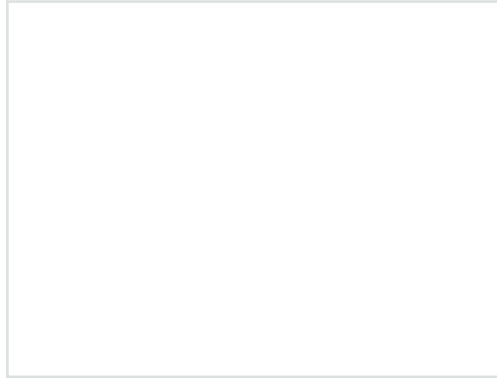
HMP-ALU-SP/HK Sub Channel System



- Sub channel system with vertical and horizontal channels
- Projection sizes up to 350 mm
- Anchors with kerfs are set in to the channels slot and fixed with tabbing screws



Msheired Downtown Doha, Doha



New American Embassy, Oslo, Qatar